



9/13/2023 Location:PleasantPlains-IL Trial: CPT-120
 PLDATE: 4/11/2023 HDATE: 9/8/2023 Irrigation: NO

Hybrid	Yield	Moisture	TWT Mn	\$/Acre
DKC68-35RIB	273.6	23.6	56.6	1163.95
NK1748-3110	277.2	25.8	53.8	1140.83
P1718VYHR	272.7	25.9	54.1	1119.00
B16Z26Q	256.3	22.7	56.0	1103.30
CP5760TRE/RIB	274.7	27.6	53.2	1097.00
CP5893TRE/RIB	257.5	23.7	56.0	1093.99
B17Z18AM	259.7	24.8	54.4	1084.94
CP5678SS/RIB	254.2	24.1	55.2	1073.57
CP5717VT2P/RIB	253.6	24.1	57.2	1070.20
B16K30AM	251.3	23.6	55.9	1068.86
DKC70-45RIB	255.0	25.4	54.0	1055.00
NK1701-V	250.3	24.5	53.2	1050.41
P1847VYHR	249.3	24.7	56.0	1043.16
DKC69-99	239.2	24.2	56.3	1007.00
NK1838-3110	233.4	26.9	52.7	943.55

Mn	259.6	25.1	54.8	1078.59
LSD(.10)	15.0	1.1	1.3	65.32
#Reps	3	3	3	3
CVErr	4.206	3.096	1.729	4.419

\$/Acre Assumptions = \$4.70/Bushel Selling Price and \$0.05/Point of Moisture over 15.5%.



Learn more about our brands at winfieldunited.com

Results are generated from field observations and may change as additional data is gathered. Crop results are dependent on the impact of many factors beyond the control of WinField United including without limitation, reduced performance due to weather, soil variations and may even reflect differences in agronomic practices.

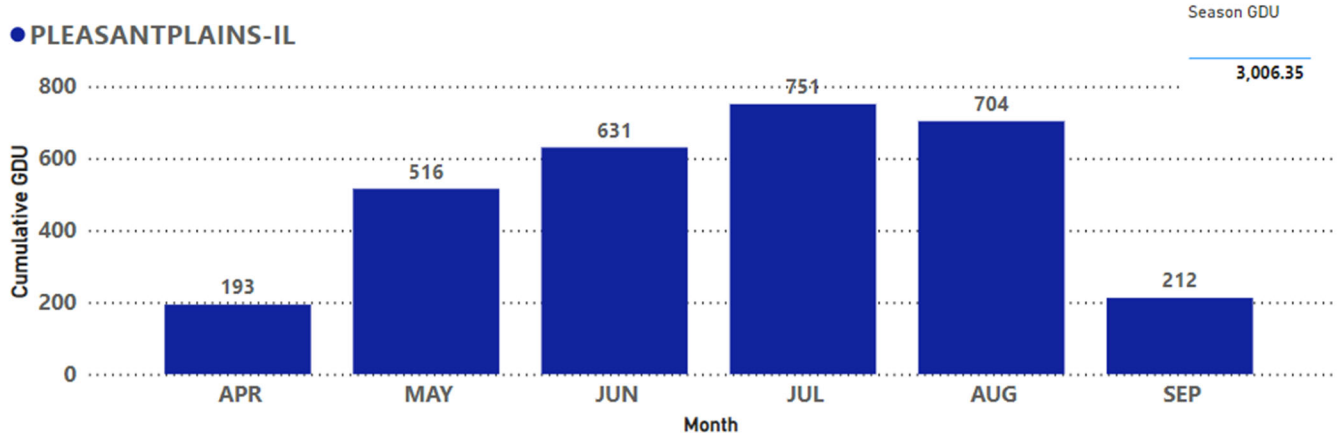
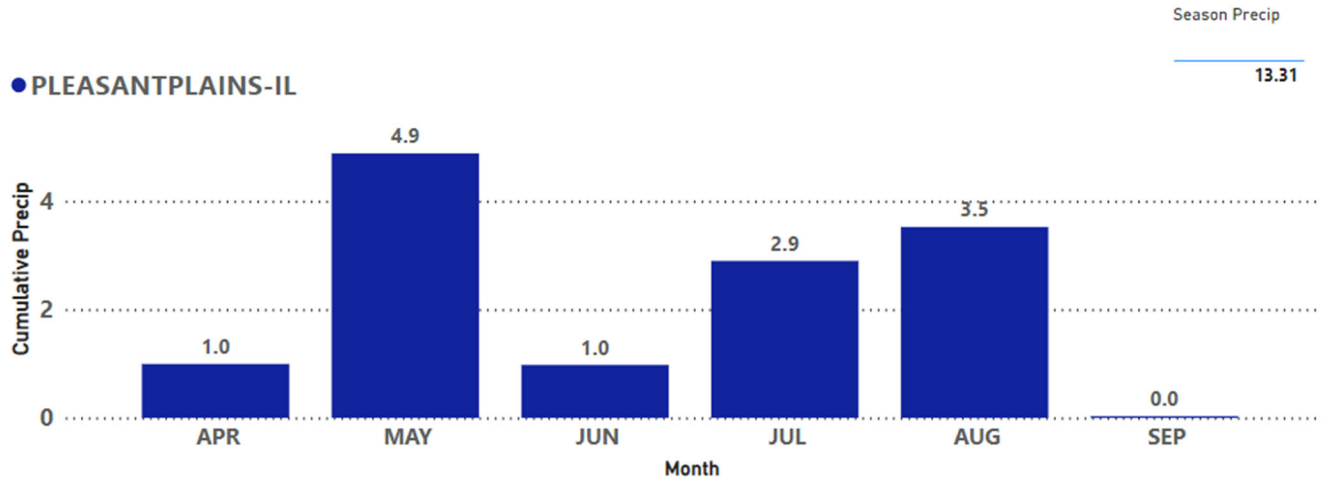
© 2023 WinField United. Answer Plot®, CROPLAN® and WinField® are trademarks of WinField United.



CORN

Answer Plot[®]
 By WINFIELD UNITED
YIELD REPORT 2023

Annual Precipitation and GDU's



WINFIELD UNITED

CROPLAN

Learn more about our brands at winfieldunited.com

Results are generated from field observations and may change as additional data is gathered. Crop results are dependent on the impact of many factors beyond the control of WinField United including without limitation, reduced performance due to weather, soil variations and may even reflect differences in agronomic practices.

© 2023 WinField United. Answer Plot[®], CROPLAN[®] and WinField[®] are trademarks of WinField United.